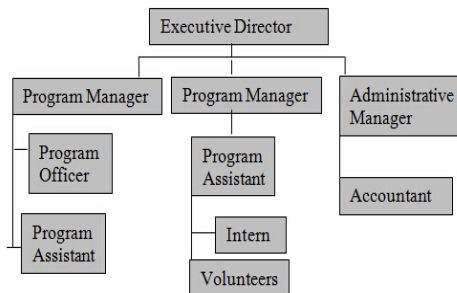




Compare the two organizational structures below. They show two different personnel structures of a small NGO. Analyzing these structures can help you think about your own organizational structure. Understanding the structure of your staff and volunteers is essential for programming, budgeting and managing your volunteers.

*Organization Structure One*



*Organization Structure Two*



1. Write down the differences you observed from the two charts.
2. In the first chart, to whom do staff and volunteers report? How about in the second chart?
3. Please draw your organization's structure. Can it be improved? If yes, please draw the best structure for your organization.